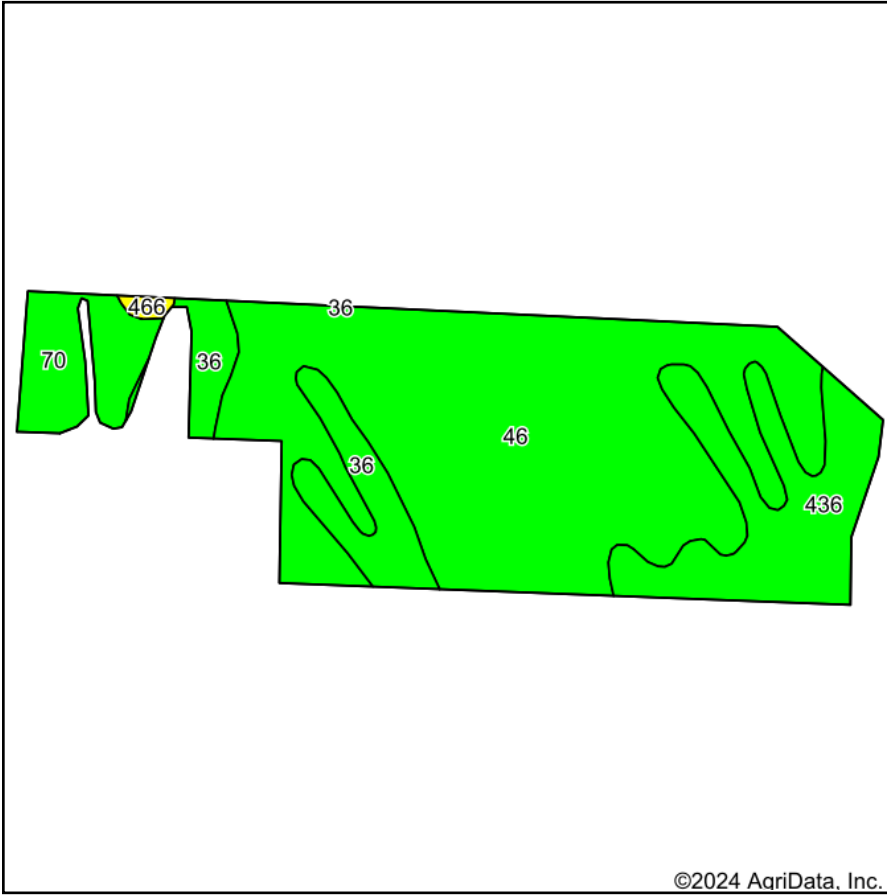
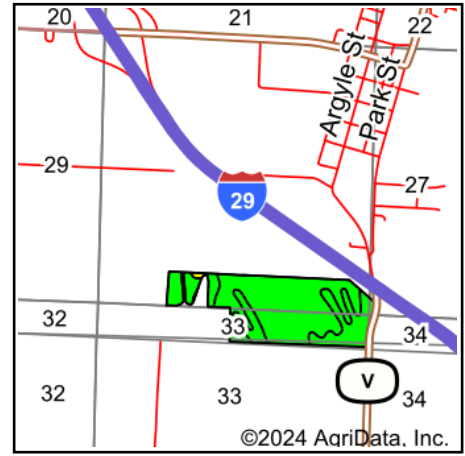


# Soils Map



Soils data provided by USDA and NRCS.



State: **Iowa**  
 County: **Fremont**  
 Location: **28-67N-42W**  
 Township: **Washington**  
 Acres: **95.54**  
 Date: **6/25/2024**



Maps Provided By:



© AgriData, Inc. 2023

www.AgriDataInc.com



Area Symbol: IA071, Soil Area Version: 30

Code	Soil Description	Acres	Percent of field	CSR2 Legend	Non-Irr Class *c	Irr Class *c	CSR2**	CSR
46	Keg silt loam	62.32	65.3%		lw		98	90
436	Lakeport silty clay loam	16.16	16.9%		lw		86	80
36	Salix silty clay loam	9.08	9.5%		lw		98	90
70	McPaul silt loam	7.48	7.8%		lw		71	85
466	Solomon clay	0.50	0.5%		lllw	lllw	57	35
<b>Weighted Average</b>					<b>1.01</b>	<b>*-</b>	<b>93.6</b>	<b>87.6</b>

\*\*IA has updated the CSR values for each county to CSR2.

\*c: Using Capabilities Class Dominant Condition Aggregation Method

\*- Irr Class weighted average cannot be calculated on the current soils data due to missing data.